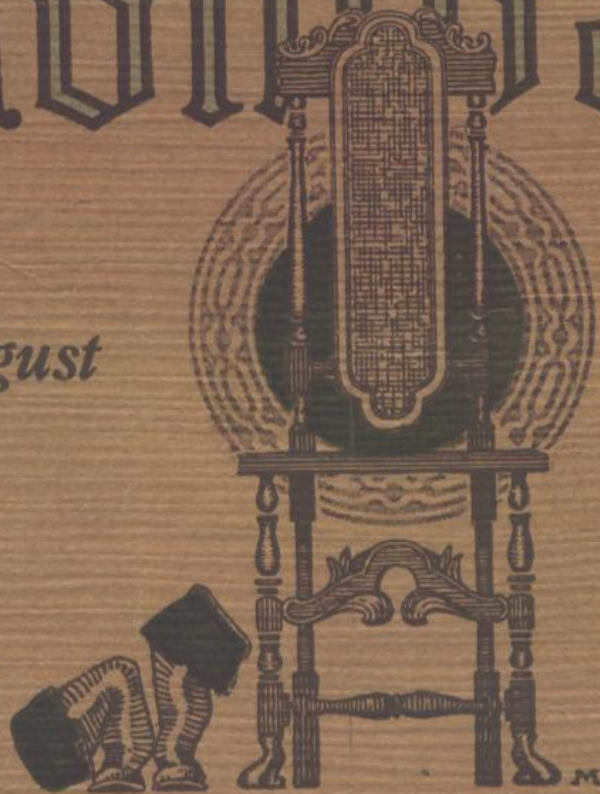


Michigan Chair Company

August

1926



Grand Rapids, Michigan

Michigan Chair Company

Grand Rapids
Michigan



AUGUST 1926



A comprehensive selection of chairs and davenports, in the manufacture of which comfort, elegance and perfect construction have always been the first considerations.



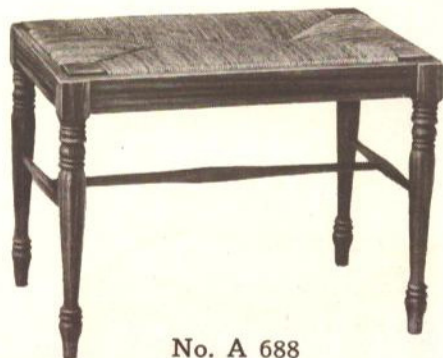
No. E 365
Solid Mahogany



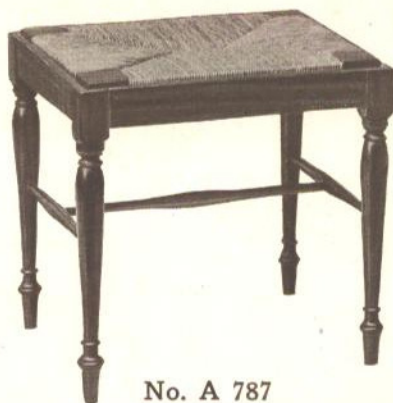
No. A 687
Solid Mahogany
Top 15 x 18. Height 18 inches



No. E 365½
Solid Mahogany



No. A 688
Solid Mahogany
Top 15 x 24. Height 18 inches



No. A 787
Solid Mahogany
Top 15 x 18. Height 18 inches



No. E 397
Solid Mahogany



No. A 786
Solid Mahogany
Top 15 x 24. Height 18 inches



No. E 397½
Solid Mahogany



No. E 371
Birch
Mahogany Finish
Walnut Finish



No. E 372
Birch
Mahogany Finish
Walnut Finish



No. E 375
Birch
Mahogany Finish
Walnut Finish



No. E 410
Birch
Mahogany Finish
Walnut Finish



No. E 411
Birch
Mahogany Finish
Walnut Finish



No. E 412
Birch
Mahogany Finish
Walnut Finish



No. E 413
Maple



No. H 706
Quartered Oak



No. H 706 $\frac{1}{4}$
Quartered Oak



No. H 707
Solid Mahogany



No. H 707 $\frac{1}{4}$
Solid Mahogany



No. E 372

No. K 185
Lacquer Decorated
Antiqued
Top 36 x 36 inches

No. E 372



No. E 371

No. K 187
Lacquer Decorated
Antiqued
Top 36 x 42 inches

No. E 371

Finished in various color combinations



No. K 214
Height 59 inches



No. K 213
Height 36 inches



No. A 712



No. K 186
Lacquer Decorated
Antiqued
Top 30 x 42 inches

Finished in various color combinations

Made by



No. K 206
Top 16 x 36 inches



No. K 205
Top 16 x 54 inches



No. D 804



No. K 204
Top 38 x 52 inches

Lacquer Decorated
Also in Gum, Walnut Veneer
Walnut Finish

Finished in various color combinations



No. K 203
Top 16 x 36 inches



No. K 202
Top 16 x 54 inches



No. D 803



No. K 201
Top 38 x 52 inches

Combination Mahogany and Gum
Mahogany and Walnut Finish



No. K 209
Top 16 x 36 inches



No. K 208
Top 16 x 54 inches



No. D 805



No. K 207
Top 38 x 52 inches

Combination Mahogany and Gum
Sheraton



No. K 282
Quartered Oak
Top 16 x 46. Height 37 inches



No. K 283
Quartered Oak
Length 46 inches
Height 63 inches
Width 16 inches



No. D 824



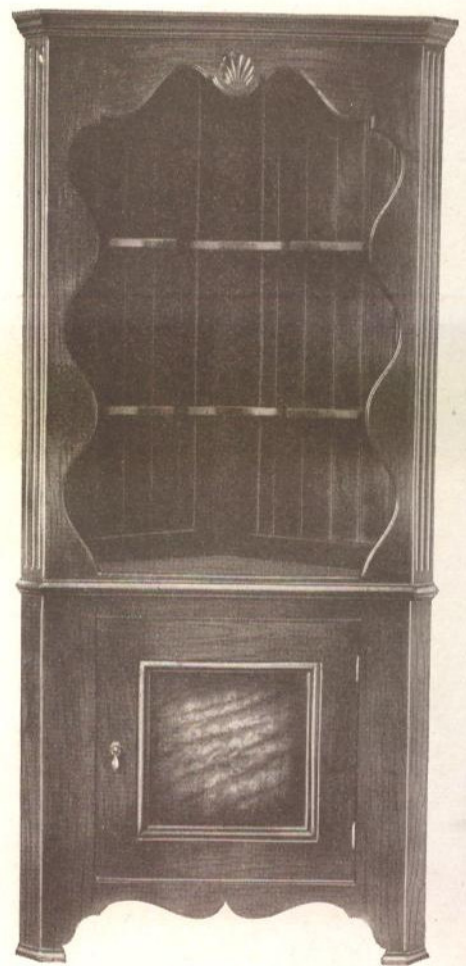
No. K 281
Quartered Oak
Top 32 x 44 inches (closed).
Top 32 x 66 inches (open).



No. D 824



No. K 200
Maple
Top 19 x 39 inches
Height 58 inches



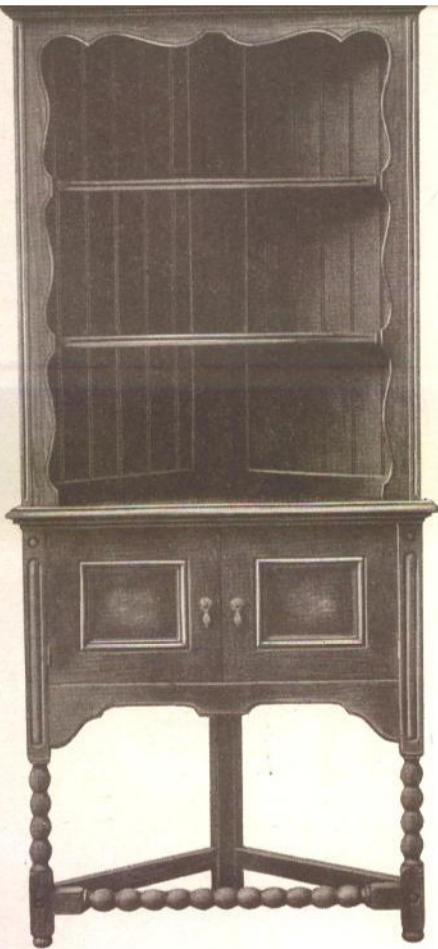
No. K 196
Maple
Antique Quartered Oak
Top 17 x 33 inches
Height 72 inches



No. A 900
Maple



No. K 199
Maple
Top 38 x 54 inches



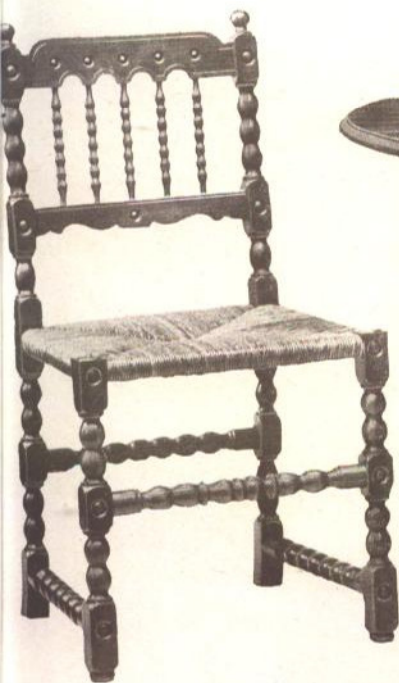
No. K 216

Top 17 x 33 inches
Height 72 inches

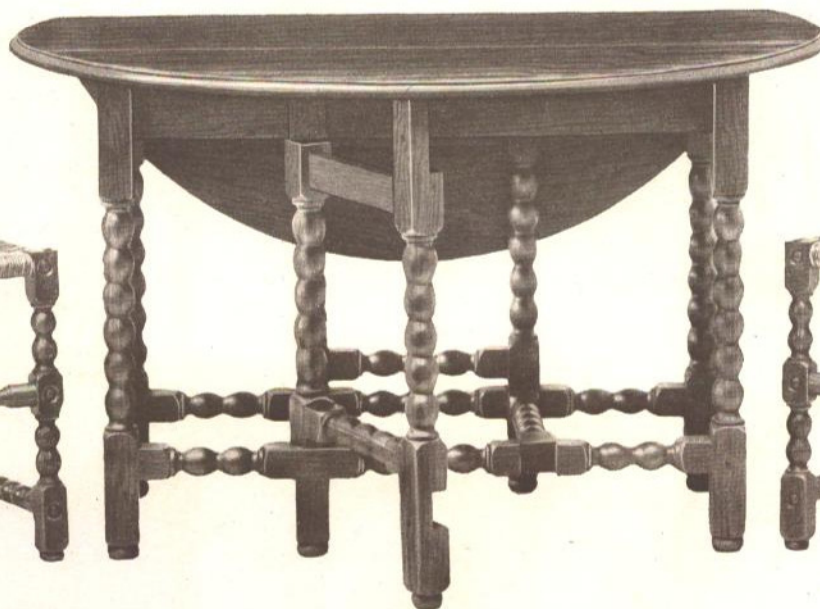


No. K 198

Top 16 x 44 inches
Height 67 inches



No. D 796



No. K 165

Top 48 x 48 inches
Solid Walnut—Antique Finish



No. D 796

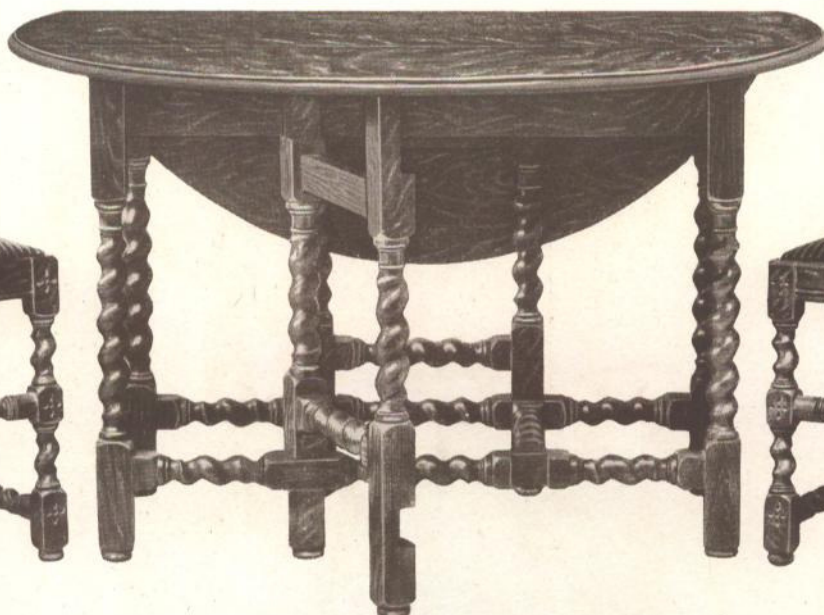


No. K 197

Top 18 x 48 inches
Height 67 inches



No. D 797



No. K 166

Top 48 x 48 inches
Quartered Oak—Antique Italian Finish
See page 104 for Corner Cupboard to match



No. D 797



No. K 246

Maple
Top 38 x 54 inches
Top 38 x 70 inches (open).



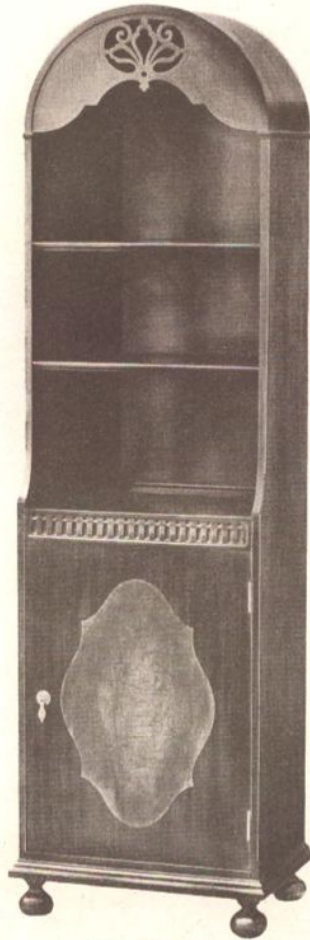
No. K 247

Quartered Oak
Top 48 x 48 inches
Top 48 x 72 inches (open).



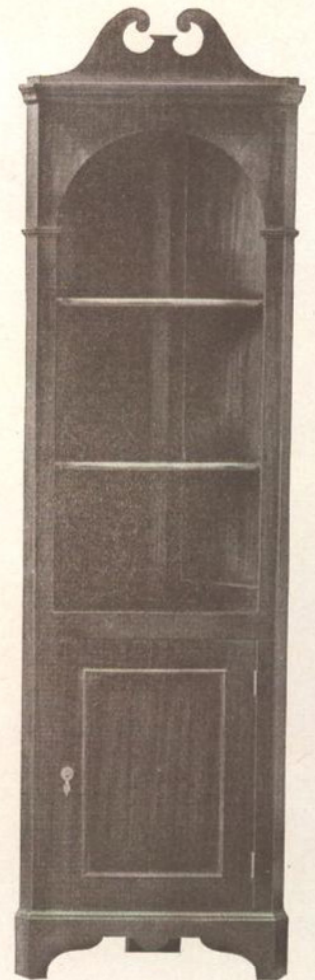
No. K 221

Solid Mahogany
Maple Panels
Height 68 inches
Width 20 inches
Depth 12 inches



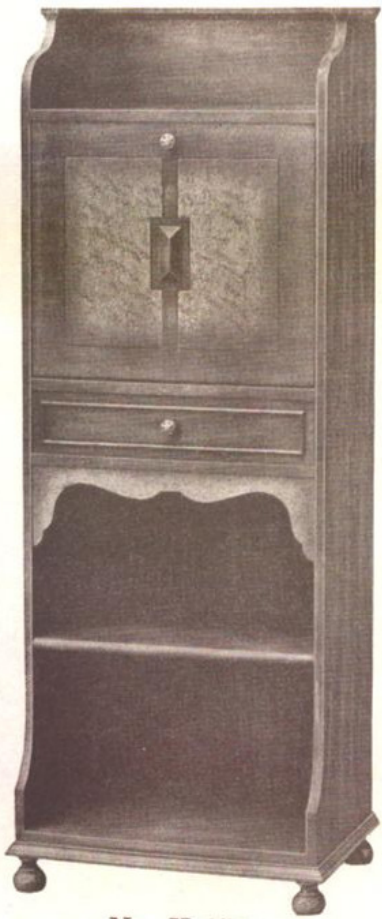
No. K 222

Solid Mahogany
Maple Panels
Height 66 inches
Width 18 inches
Depth 12 inches



No. K 223

Solid Mahogany
Height 78 inches
Width 23 inches
Depth 12 inches



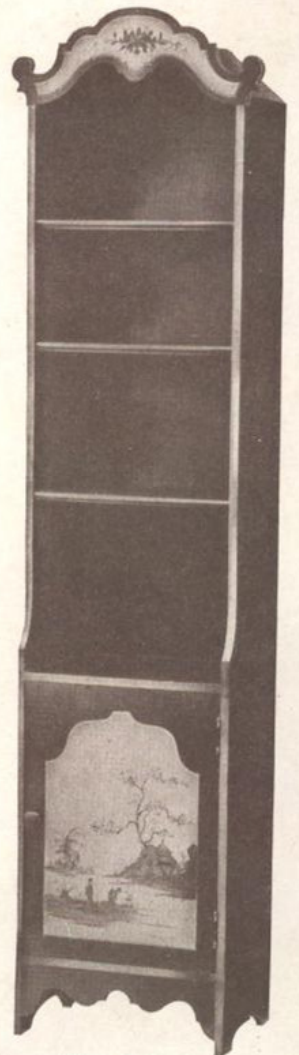
No. K 270

Solid Mahogany
Maple Panel
Top 12 x 18 inches
Height 49 inches



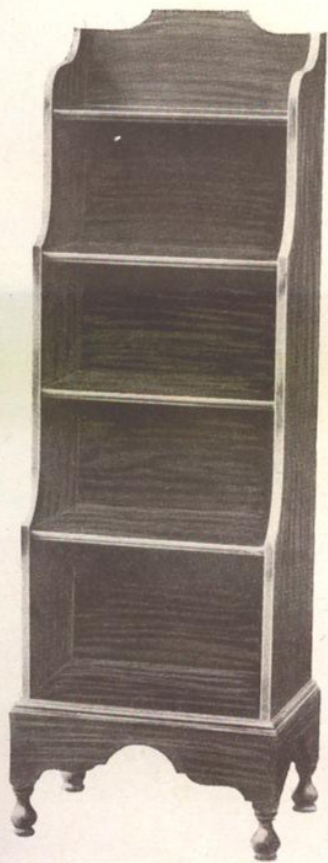
No. K 272

Solid Mahogany
Top 11 x 16 inches
Height 61 inches



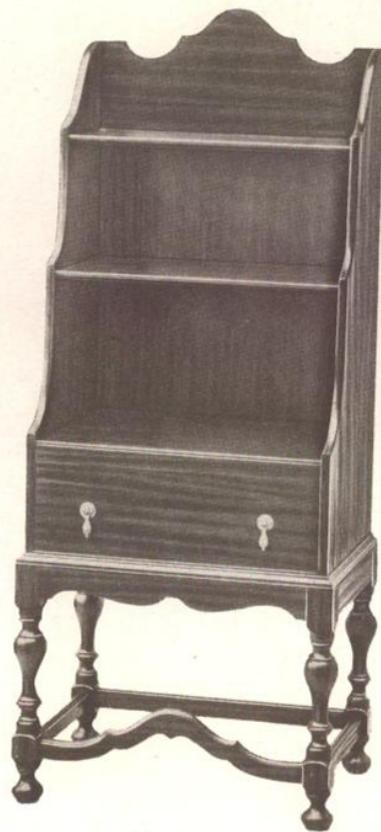
No. K 271

Enamel, Decorated
Top 11 x 19 inches
Height 73 inches



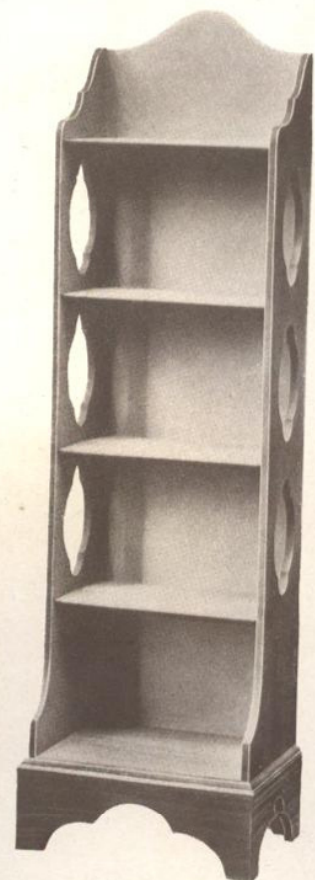
No. K 219

Birch
Enamel
Height 52 inches
Width 17 inches
Depth 12 inches



No. K 217

Solid Mahogany
Height 52 inches
Width 21 inches
Depth 14 inches



No. K 220

Birch
Enamel
Height 58 inches
Width 17 inches
Depth 12 inches



No. K 235 Open



No. K 236 Open



No. K 235 Closed
Top 14 x 22 inches
Height 54 inches



No. K 236 Closed
Top 13 x 22 inches
Height 61 inches



No. K 241
Solid Walnut
Top 14 x 32 inches
Height 45 inches



No. D 811
Solid Walnut
Height 35 inches



No. D 808
Solid Walnut
Height 35 inches



No. K 237
Solid Walnut
Top 26 x 34 inches
Height 38 inches



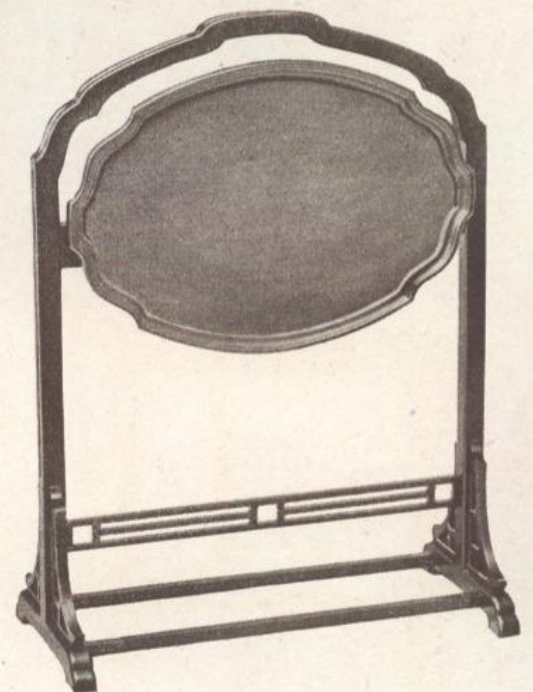
No. K 136
Solid Walnut
Top 15 x 21. Height 22 inches



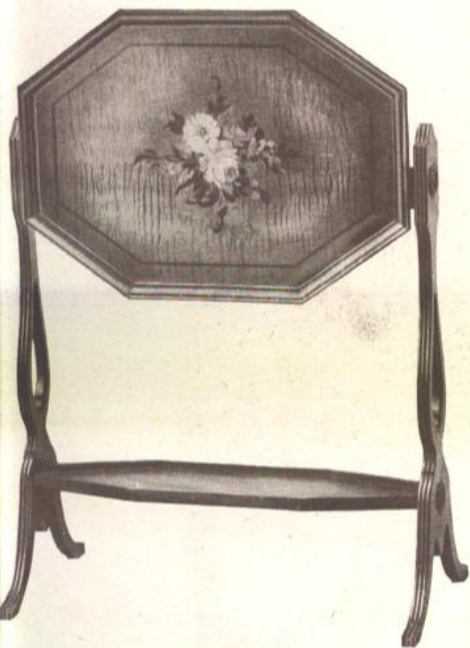
No. K 138
Solid Mahogany
Top 16 x 24. Height 22 inches



No. K 137
Solid Mahogany
Top 15 x 21. Height 22 inches



No. K 140
Birch
Lacquer Decorated
Top 14 x 20. Height 30 inches



No. K 227
Maple
Top 15 x 21 inches
Height 24 inches



No. K 228
Mahogany and Maple
Top 16 x 24 inches
Height 24 inches



No. K 230
Maple
Top 16 x 25 inches
Height 25 inches



No. K 141

Solid Mahogany
Top 16 x 16. Height 19 inches



No. K 142

Lacquer Decorated
Top 18 x 18. Height 19 inches



No. K 145

Solid Walnut
Top 18 x 30. Height 19 inches



No. K 143

Lacquer Decorated
Top 18 x 30. Height 19 inches



No. K 144

Solid Mahogany
Top 17 x 28. Height 19 inches



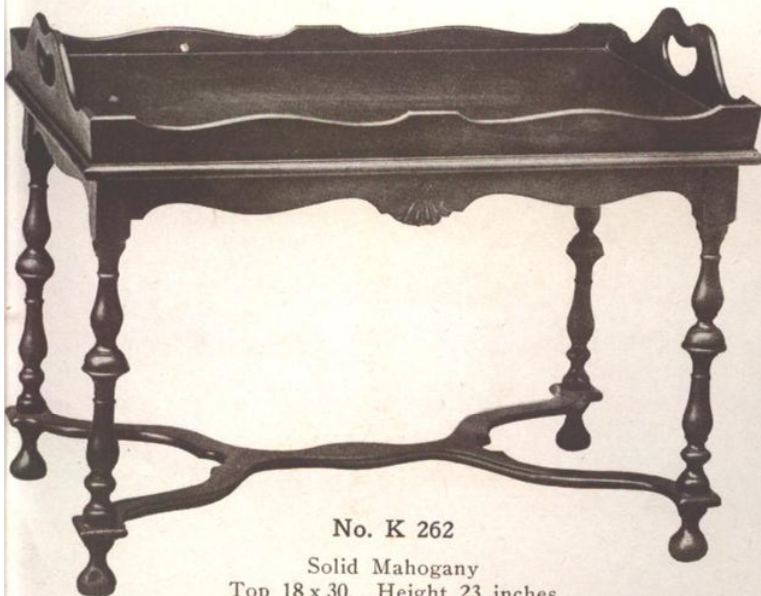
No. K 264
Maple
Top 18 x 30. Height 22 inches



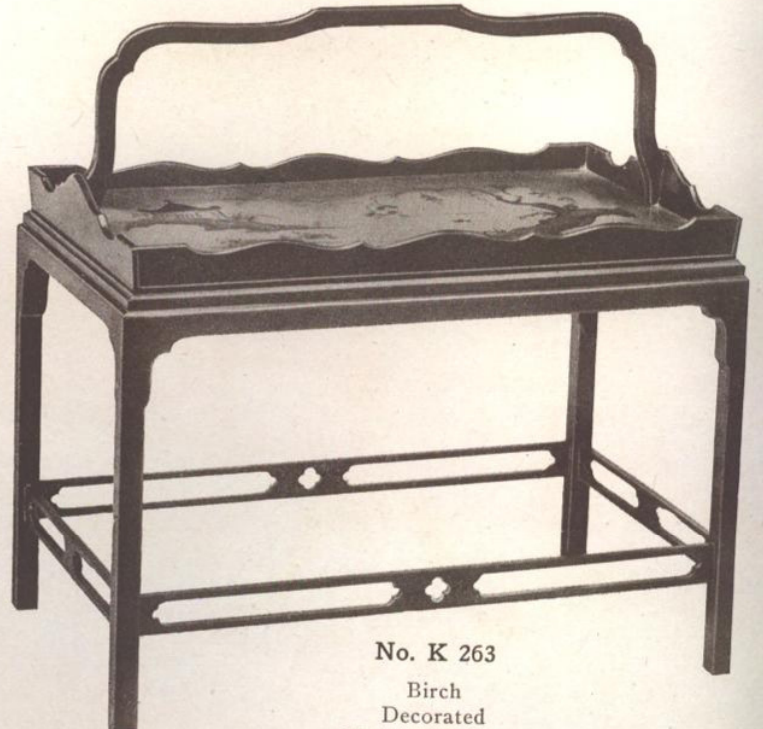
No. K 266
Solid Walnut
Top 18 x 30. Height 23 inches



No. K 265
Solid Walnut
Top 18 x 30. Height 26 inches



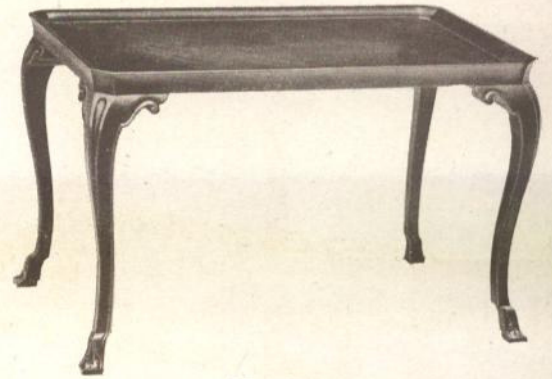
No. K 262
Solid Mahogany
Top 18 x 30. Height 23 inches



No. K 263
Birch
Decorated
Mahogany Finish
Walnut Finish
Top 17 x 28. Height 29 inches



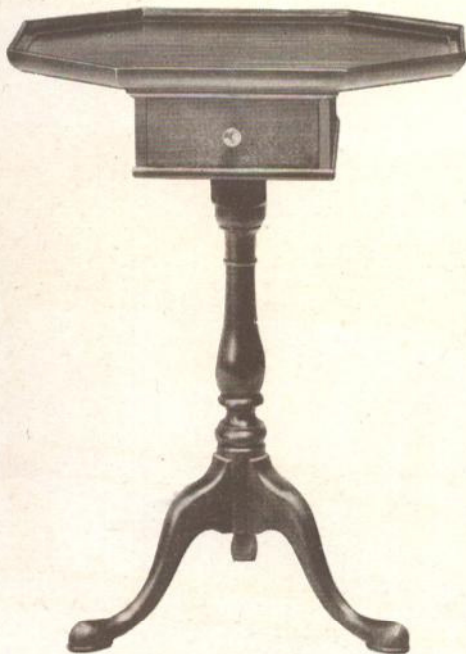
No. K 146
Lacquer Decorated
Top 20 x 30. Height 19 inches



No. K 148
Solid Mahogany
Top 18 x 30. Height 19 inches



No. K 147
Solid Mahogany
Top 18 x 18. Height 19 inches



No. K 154
Solid Mahogany
Top 14 x 20. Height 27 inches

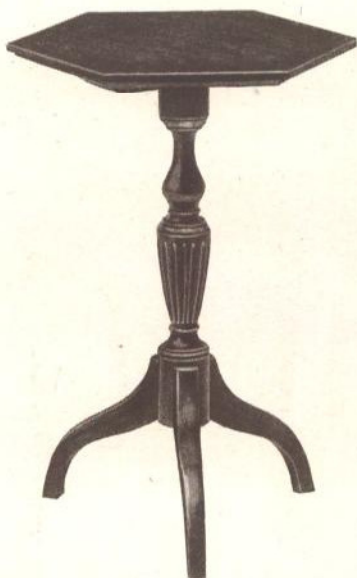


No. K 156
Solid Walnut
Top 12 x 20. Height 24 inches



No. K 182

Maple
Maple Finish
Mahogany Finish
Top 20 x 20. Height 22 inches



No. K 184

Maple
Maple Finish
Mahogany Finish
Top 15 x 15. Height 25 inches



No. K 134

Solid Mahogany
Top 18 x 18. Height 24 inches



No. K 152

Solid Walnut
Top 24 x 24. Height 26 inches



No. K 149

Combination Gum and Mahogany
Mahogany Finish
Walnut Finish
Top 20 x 20. Height 24 inches



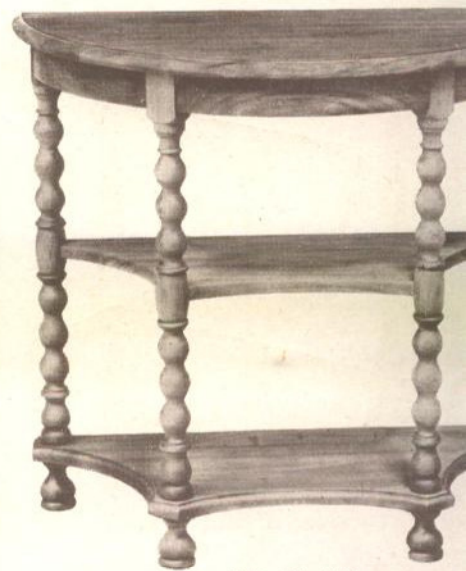
No. K 158

Solid Walnut
Top 12 x 26. Height 24 inches



No. K 130

Gum
Mahogany Finish
Walnut Finish
Top 11 x 24. Height 27 inches



No. K 160

Solid Mahogany
Top 13 x 26. Height 24 inches



No. K 132

Solid Walnut
Top 14 x 24. Height 24 inches



No. K 157

Solid Mahogany
Top 14 x 28. Height 24 inches



No. K 159

Combination Gum and Walnut
Mahogany Finish
Walnut Finish
Top 14 x 28. Height 24 inches

Made by
MASTER CR



No. K 90

Combination Gum and Mahogany
Mahogany Finish
Walnut Finish
Top 12 x 24. Height 22 inches



No. K 131

Solid Walnut
Top 10 x 26. Height 25 inches



No. K 96

Solid Mahogany
Top 13 x 26. Height 24 inches



No. K 95

Solid Mahogany
Top 13 x 26. Height 24 inches



No. K 267

Solid Walnut
Top 13 x 26. Height 24 inches



No. K 259

Solid Walnut and Maple
Top 14 x 24. Height 24 inches



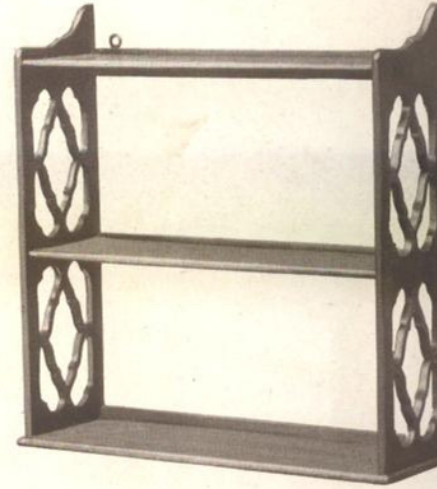
No. K 210

Birch
Lacquer Decorated
Mahogany Finish
Walnut Finish
Top 6½ x 14. Height 22 inches



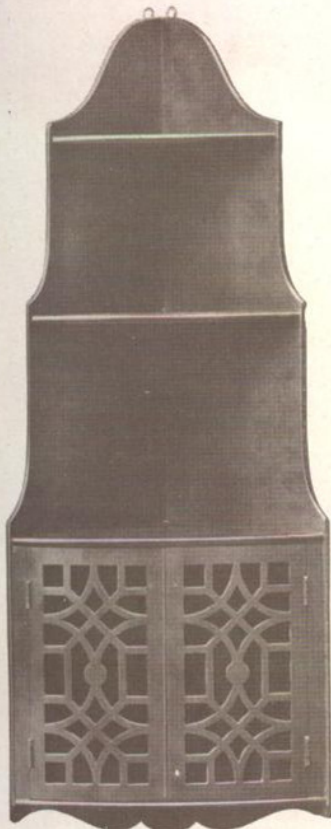
No. K 212

Birch
Lacquer Decorated
Mahogany Finish
Walnut Finish
Top 7½ x 20. Height 25½ inches



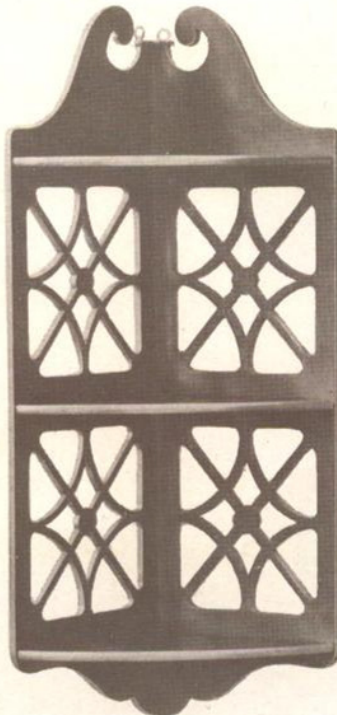
No. K 211

Birch
Lacquer Decorated
Mahogany Finish
Walnut Finish
Top 6 x 20. Height 20½ inches



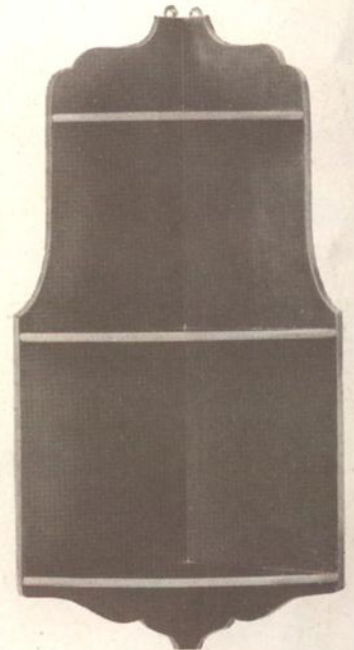
No. K 226

Birch
Decorated
Height 40 inches
Width 15 inches
Depth 11 inches



No. K 225

Birch
Decorated
Height 32 inches
Width 14 inches
Depth 9 inches



No. K 224

Birch
Decorated
Height 28 inches
Width 14 inches
Depth 9 inches



No. K 258

Solid Walnut
Top 20 x 30. Height 24 inches



No. K 179

Maple
Maple Finish
Mahogany Finish
Top 22 x 30. Height 26 inches



No. K 180

Maple
Maple Finish
Mahogany Finish
Top 20 x 20. Height 25 inches



No. K 231

Solid Mahogany
Maple Inlay
Top 30 x 30. Height 28 inches



No. K 232

Solid Mahogany
Maple Veneer Top
Top 26 x 26. Height 27 inches



No. K 174
Solid Mahogany
Top 30 x 30. Height 28 inches



No. K 175
Solid Walnut
Top 26 x 26. Height 28 inches



No. K 177
Solid Walnut
Top 28 x 28. Height 28 inches



No. K 176
Solid Mahogany
Top 28 x 28. Height 28 inches



No. K 66

Combination Gum and Mahogany
Mahogany Finish
Walnut Finish
Top 13 x 26. Height 30 inches



No. K 67

Combination Gum and Mahogany
Mahogany Finish
Walnut Finish
Top 12 x 26. Height 30 inches



No. K 70

Solid Mahogany
Top 14 x 28. Height 30 inches



No. K 69

Solid Mahogany
Top 12 x 26. Height 30 inches



No. K 68

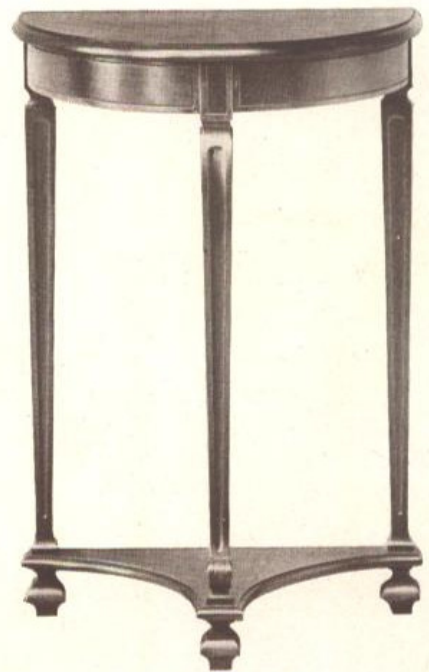
Combination Gum and Mahogany
Mahogany Finish
Walnut Finish
Top 13 x 26. Height 30 inches



No. K 122

Solid Mahogany
Top 11 x 20. Height 30 inches

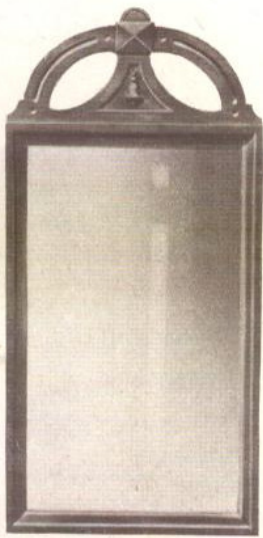
Mirror No. K 122½
10 x 28 inches



No. K 123

Solid Mahogany
Top 11 x 20. Height 30 inches

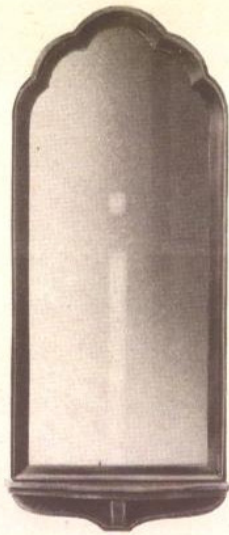
Mirror No. K 123½
10 x 28 inches



No. K 167

Combination Mahogany and Birch
Mahogany Finish
Walnut Finish
Top 12 x 24. Height 30 inches

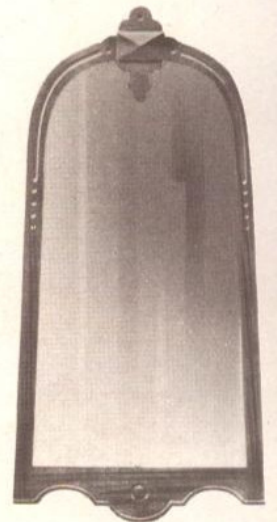
Mirror No. K 167½
12 x 20 inches



No. K 168

Birch
Lacquer Decorated
Black and Red
Top 11 x 24. Height 30 inches

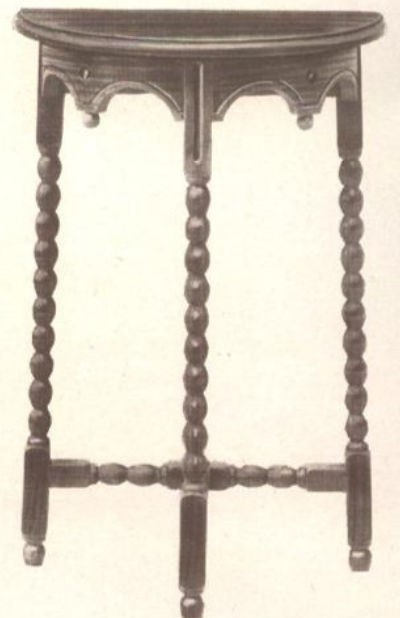
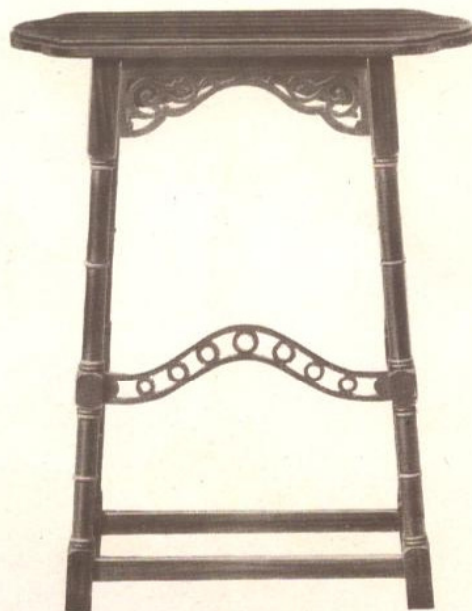
Mirror No. K 168½
10 x 24 inches

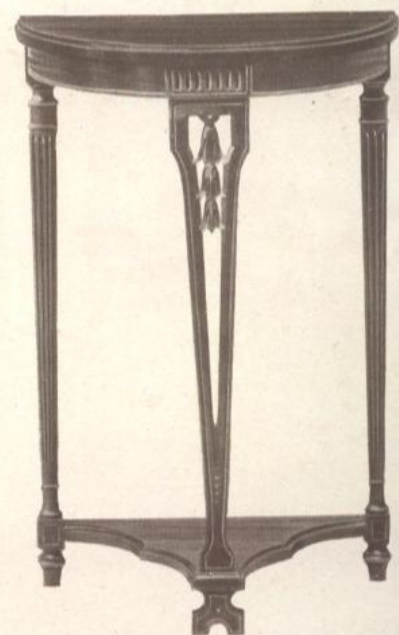
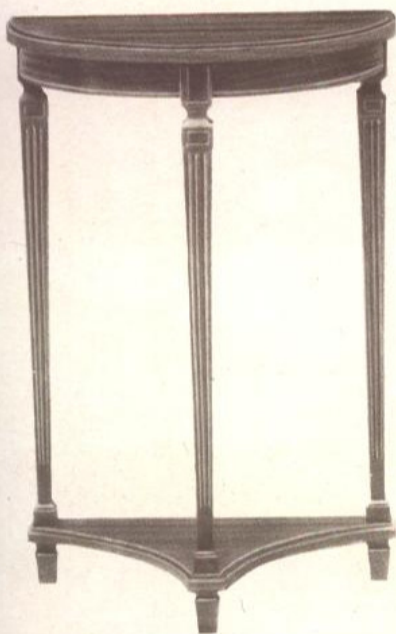
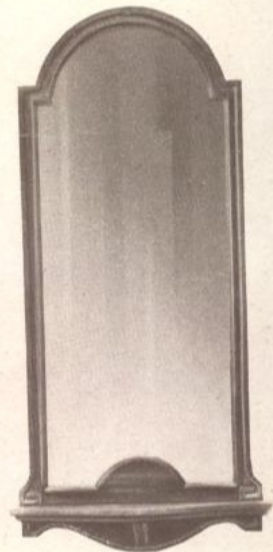
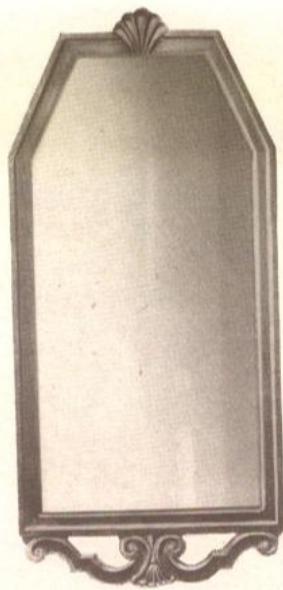


No. K 169

Combination Mahogany and Birch
Mahogany Finish
Walnut Finish
Top 11 x 20. Height 30 inches

Mirror No. K 169½
12 x 22 inches





No. K 170

Solid Mahogany
Top 11 x 20. Height 30 inches

Mirror No. K 170½
10 x 22 inches

No. K 171

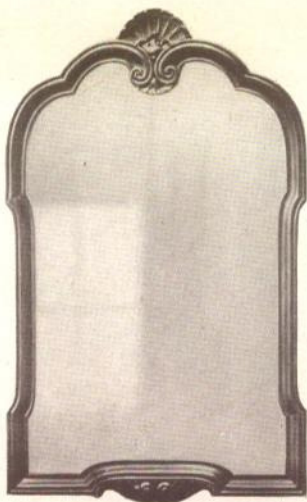
Solid Mahogany
Top 12 x 22. Height 30 inches

Mirror No. K 171½
12 x 24 inches

No. K 172

Solid Mahogany
Top 11 x 20. Height 30 inches

Mirror No. K 172½
10 x 24 inches



No. D 714
Height 46 inches

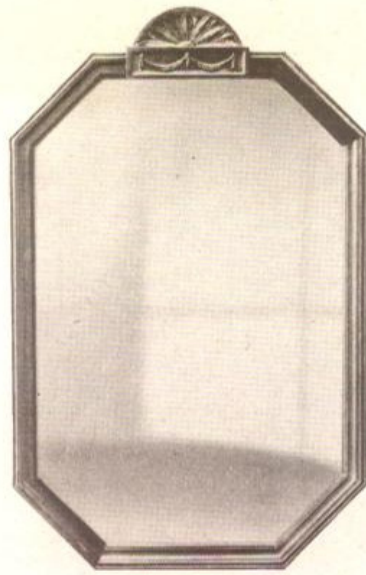


No. K 118
Solid Mahogany
Top 20 x 48. Height 32 inches

Mirror No. K 118½
18 x 28 inches



No. D 714
Height 46 inches



No. D 760
Height 35 inches

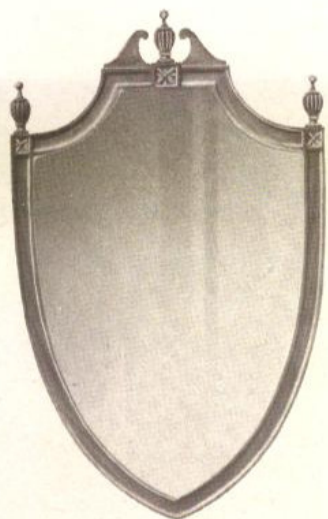


No. K 115
Solid Mahogany
Top 18 x 36. Height 30 inches

Mirror No. K 115½
16 x 24 inches



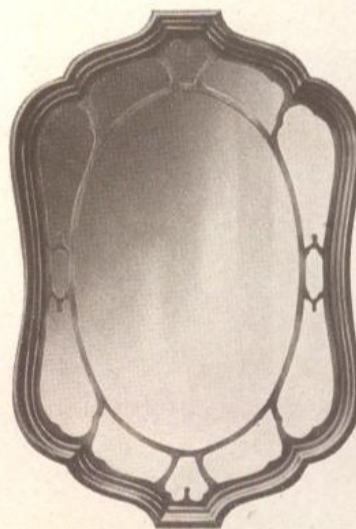
No. D 760
Height 35 inches



No. K 190

Solid Mahogany and Maple
Top 16 x 32. Height 33 inches

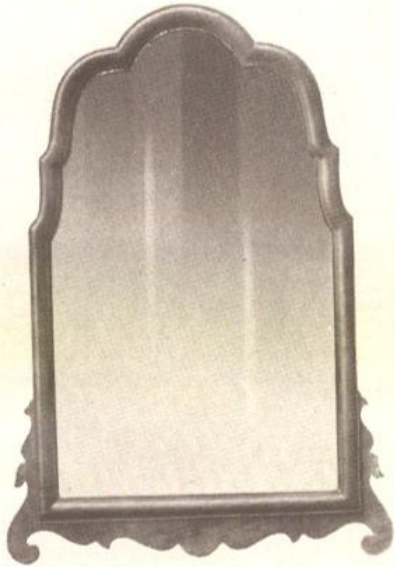
Mirror No. K 190½
16 x 24 inches



No. K 193

Solid Mahogany and Maple
Top 17 x 36. Height 33 inches

Mirror No. K 193½
20 x 30 inches



No. K 189

Solid Mahogany and Maple
Top 17 x 32. Height 32 inches

Mirror No. K 189½
16 x 26 inches



No. K 188

Solid Mahogany and Maple
Top 16 x 29. Height 36 inches

Mirror No. K 188½
16 x 26 inches

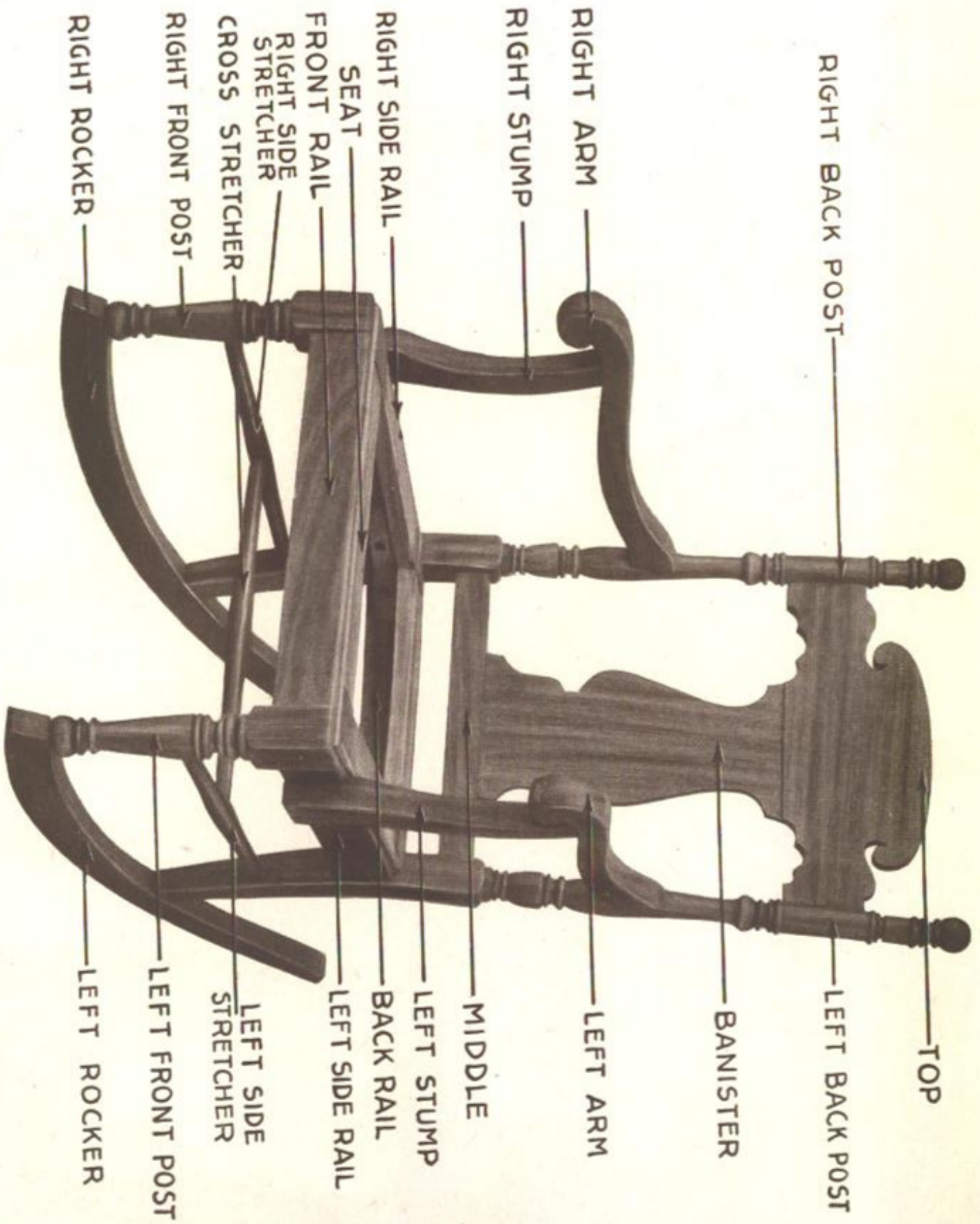


No. D 770 with Fringe
Height 49 inches

No. K 128
Quartered Oak
Antique Finish
Top 16 x 48. Height 32 inches

No. D 770 with Fringe
Height 49 inches

Mirror No. K 128½
20 x 32 inches



RIGHT BACK POST —

TOP

LEFT BACK POST —

BANISTER —

LEFT ARM —

MIDDLE —

LEFT STUMP —

BACK RAIL —

LEFT SIDE RAIL —

SEAT —

FRONT RAIL —

RIGHT SIDE STRETCHER —

CROSS STRETCHER —

RIGHT FRONT POST —

LEFT SIDE STRETCHER —

LEFT FRONT POST —

RIGHT ROCKER —

LEFT ROCKER —